
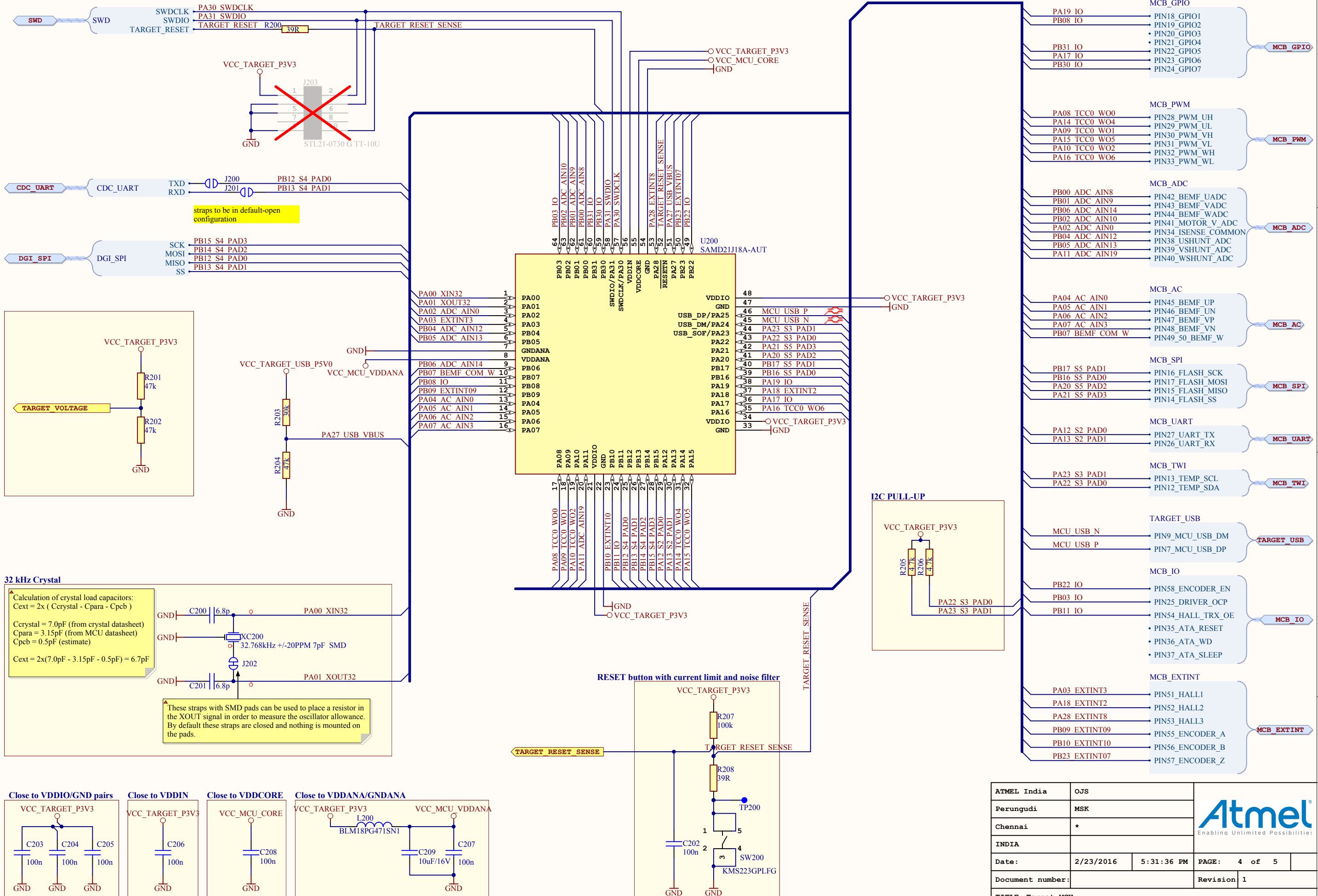

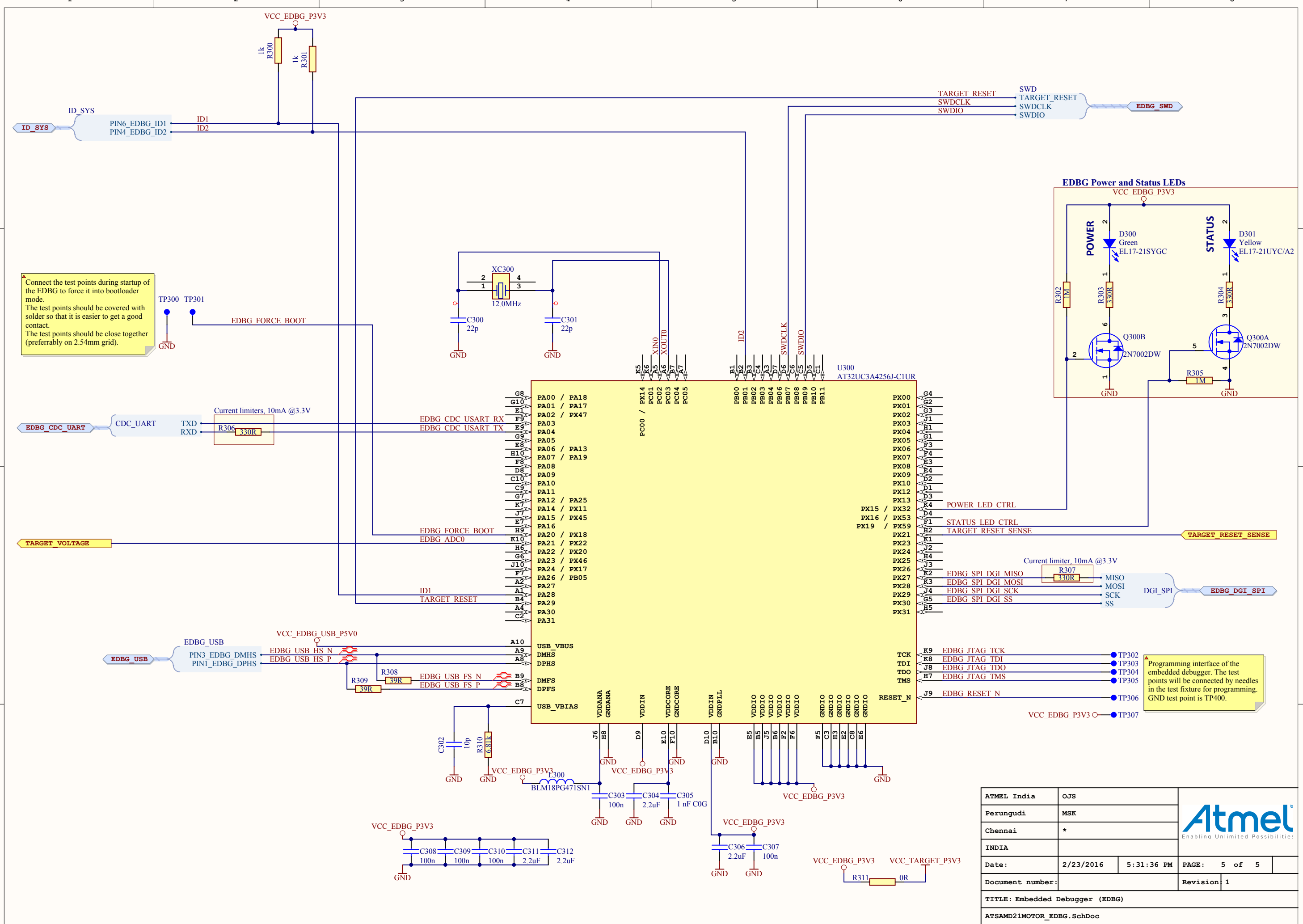


ATMEL India	OJS		 Enabling Unlimited Possibilities		
Perungudi	MSK				
Chennai	*				
INDIA					
Date:	2/23/2016	5:31:36 PM	PAGE:	3 of 5	
Document number:			Revision:	1	
TITLE: Daughter Board Connector					
ATSAMD21MOTOR_CONNECTOR.SchDoc					




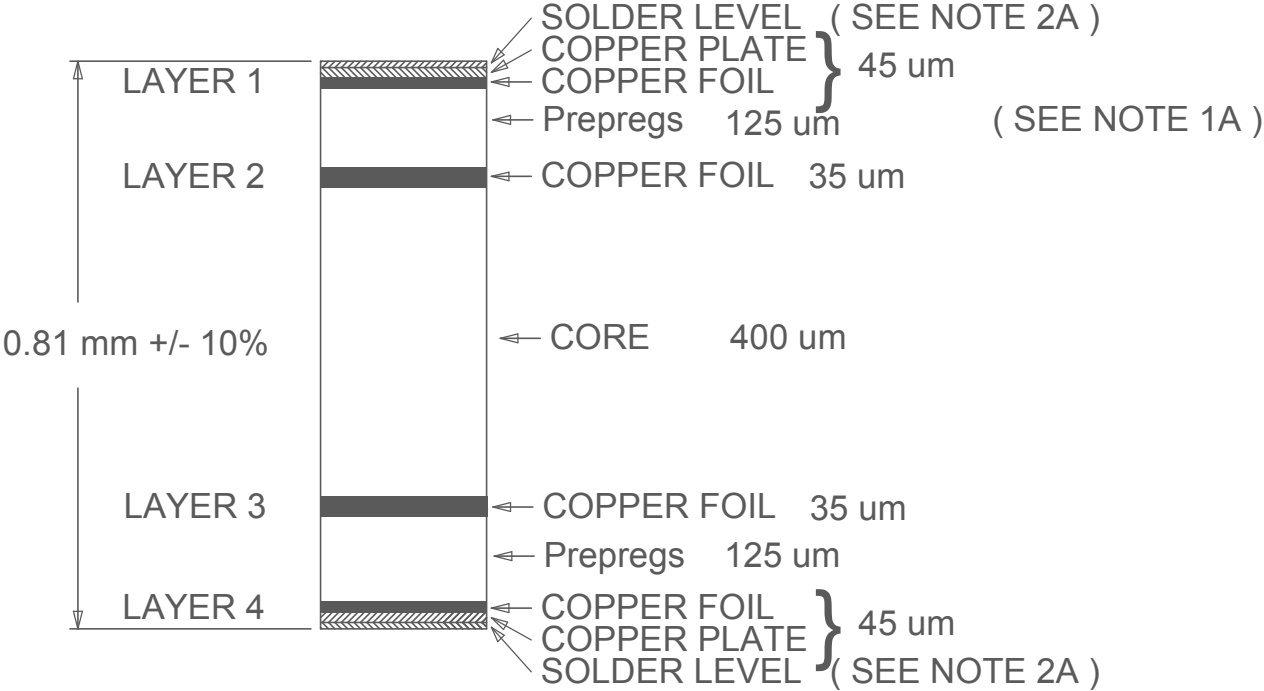
ATMEL India	OJS	 Enabling Unlimited Possibilities		
Perungudi	MSK			
Chennai	*			
INDIA				
Date:	2/23/2016	5:31:36 PM	PAGE:	4 of 5
Document number:			Revision	1
TITLE: Target MCU				
ATSAMD21MOTOR_TARGET.SchDoc				



Connect the test points during startup of the EDBG to force it into bootloader mode. The test points should be covered with solder so that it is easier to get a good contact. The test points should be close together (preferably on 2.54mm grid).

Programming interface of the embedded debugger. The test points will be connected by needles in the test fixture for programming. GND test point is TP400.

ATMEL India		OJS		 Enabling Unlimited Possibilities!	
Perungudi		MSK			
Chennai		*			
INDIA					
Date:	2/23/2016	5:31:36 PM	PAGE:	5 of 5	
Document number:				Revision:	1
TITLE: Embedded Debugger (EDBG)					
ATSAMD21MOTOR_EDBG.SchDoc					



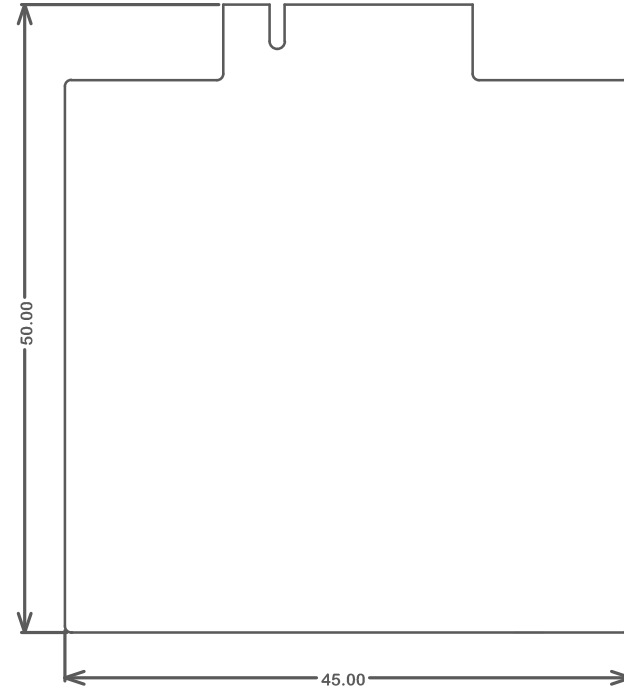
NOTE 1A: DIELECTRIC FR4

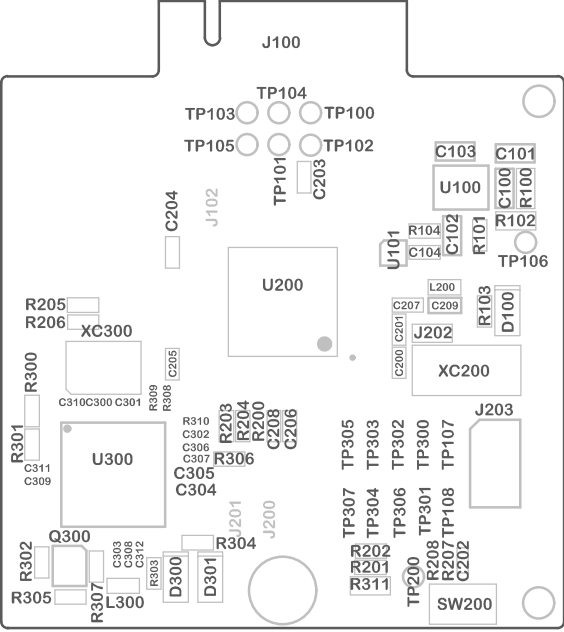
NOTE 2A: SURFACE PROTECTION: Chemical Gold

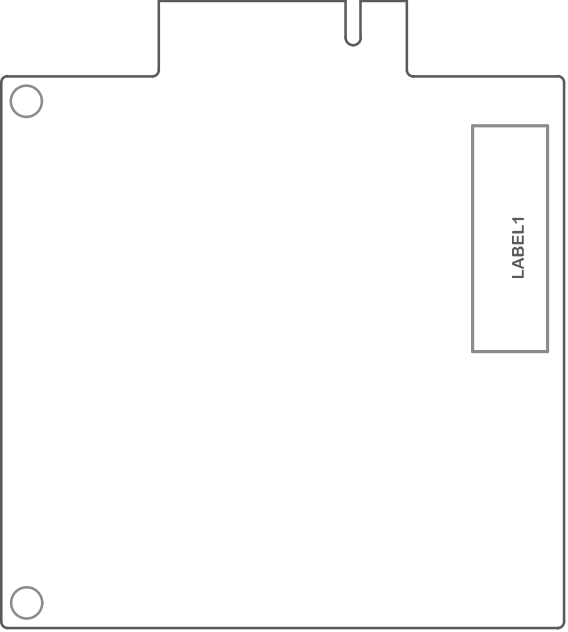
THE BOARD MUST BE RoHS COMPLIANT

## DETAIL A ( CROSS-SECTION )

SCALE = NONE







LABEL1

Atmel SMART

ATSAMD21MOTOR

1 11 13 67

VL WH  
WL UH  
UL VH

J102

GND

BEMF\_W

PWR

CORTEX DBG

GND

VTG TMS  
TDO TDI  
RST TCK  
BOOT GND  
VCC GND

RESET

J201

J200

PWR STA





66

12 10 2



Atmel Corp © 2015

PCBA LABEL

A08-2324 Rev 1

